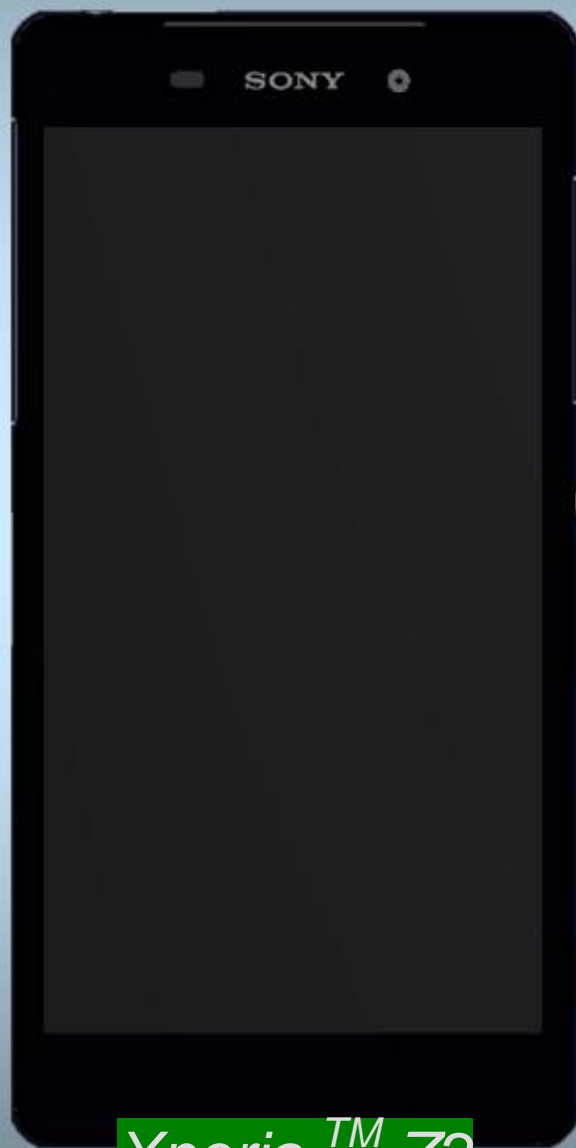


# Component Replacement

- electrical -



*Xperia™ Z2*  
*L50t, L50u*

**CONTENTS**

1 Replaceable Components ..... 3

2 Component Placing..... 5

3 Additional Repair info ..... 6

4 Revision History ..... 12

*For general information about electrical repair related issues, refer to 1220-1336: Generic Repair Manual - electrical*

*Test after electrical replacement: refer to 1273-1772 Mechanical Test Instruction*

*Do not remove shield can lids (Heat pasta are added and RF performance will be damaged)*

# 1 Replaceable Components

## EXPLANATION OF ABBREVIATIONS USED IN THE COLUMN 'COMMENTS' BELOW

### **COMPONENT LOCATION**

**P** = Primary side

**S** = Secondary side

### **REPAIR METHOD**

**HA** = Hot Air (removal & mounting)

**ST** = Soldering Tool (removal & mounting)

**HA/ST** = Hot Air for removal - Soldering Tool for mounting

**BGA** = BGA Station

**BH** = Bottom Heater

### **ADDITIONAL INFORMATION**

⇒1 (2,3,4, etc.) = Proceed to 'Additional Repair Info' for further instructions in the indicated section(s).

| Position | Component                                | Part no.  | Comments           |
|----------|--|-----------|--------------------|
| B3504    | Microphone                               | 1210-7410 | P HA+BH or BGA ⇨1  |
| L2202    | Filter 220ohm 0603 2A 0.05ohm Bead       | 1001-1896 | S HA+BH ⇨2         |
| R1304    | Resistor 0.01 Ohm +/-1% 200.0 mW (1.6x0. | 1238-2147 | P HA+BH ⇨3         |
| R5101    | Ferrite B 1.8 kOhm                       | 1237-6064 | P HA+BH ⇨4         |
| R5102    | Ferrite B 1.8 kOhm                       | 1237-6064 | P HA+BH ⇨4         |
| V7800    | LED flash LED 2.03mmx1.63mmx0.70mm       | 1277-7270 | P HA+BH ⇨5         |
| X1300    | Conn BtB Plug 4p HIROSE/BM22             | 1264-8491 | P HA+BH ⇨6         |
| X1301    | Conn BtB Receptacle 4p HIROSE/BM22       | 1264-6156 | P HA+BH ⇨7         |
| X2200    | Conn USB B Receptacle 5p                 | 1268-3388 | S HA+BH or BGA ⇨8  |
| X2400    | Conn Leaf Spring Receptacle 1p Antenna/G | 1238-5879 | S HA+BH ⇨9         |
| X2801    | Conn Coax Receptacle 1p                  | 1261-3585 | P HA+BH ⇨10        |
| X2802    | Conn Coax Receptacle 1p                  | 1237-5326 | P HA+BH ⇨11        |
| X2803    | Conn Coax Receptacle 1p                  | 1237-5326 | P HA+BH ⇨12        |
| X2804    | Conn Coax Receptacle 1p                  | 1261-3585 | S HA+BH ⇨13        |
| X2805    | Conn Coax Receptacle 1p                  | 1237-5326 | P HA+BH ⇨14        |
| X2811    | Conn Leaf Spring Plug 1p Antenna/GND Spr | 1239-2123 | S HA+BH ⇨15        |
| X2812    | Conn Leaf Spring Plug 1p Antenna/GND Spr | 1239-2123 | S HA+BH ⇨15        |
| X2820    | Conn Leaf Spring Plug 1p Antenna/GND Spr | 1239-2123 | S HA+BH ⇨16        |
| X2821    | Conn Leaf Spring Plug 1p Antenna/GND Spr | 1239-2123 | S HA+BH ⇨16        |
| X4000    | Card Conn SIM                            | 1271-9742 | S HA+BH or BGA ⇨17 |
| X4100    | Card Conn Micro SD                       | 1254-2021 | S HA+BH or BGA ⇨18 |
| X8103    | Conn Coax Receptacle 1p                  | 1237-5326 | P HA+BH ⇨19        |
| X8400    | Conn Leaf Spring Plug 1p Antenna/GND Spr | 1239-2123 | P HA+BH ⇨20        |
| X8650    | Conn Leaf Spring Plug 1p Antenna/Groundi | 1238-5878 | P HA+BH ⇨21        |
| X8651    | Conn Leaf Spring Plug 1p Antenna/Groundi | 1238-5878 | P HA+BH ⇨21        |

[illegible]

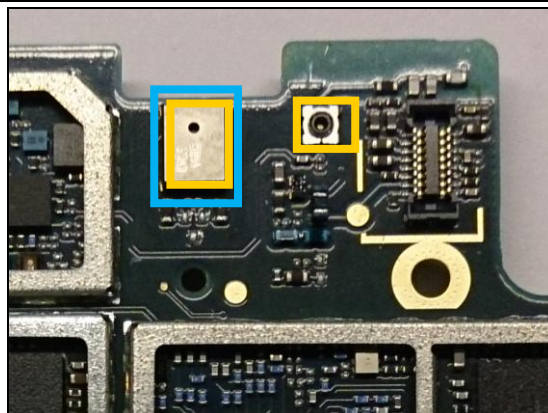
5(12)

## 3 Additional Repair info

1

**B3504**

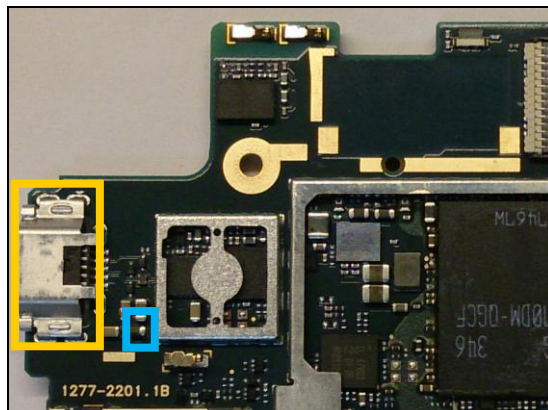
*Replace if no audio from secondary mic*  
*Protect the RF connector with capton tape!*  
*When replacing protect secondary mic with capton tape!*



2

**L2202**

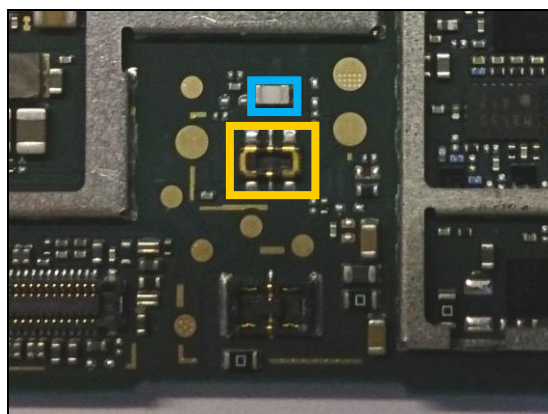
*Replace if open circuit (USB charger or data transfer not working)*



3

**R1304**

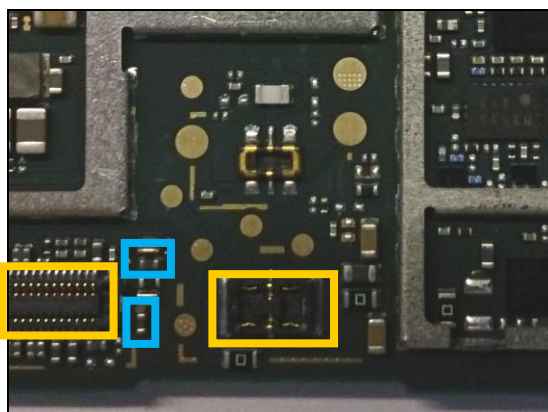
*Replace if open circuit (Phone Dead)*  
*Protect the BtB connector with capton tape!*



4

**R5101, R5102**

*Replace if open circuit (Vibrator not working)*  
*Protect the BtB connectors with capton tape!*

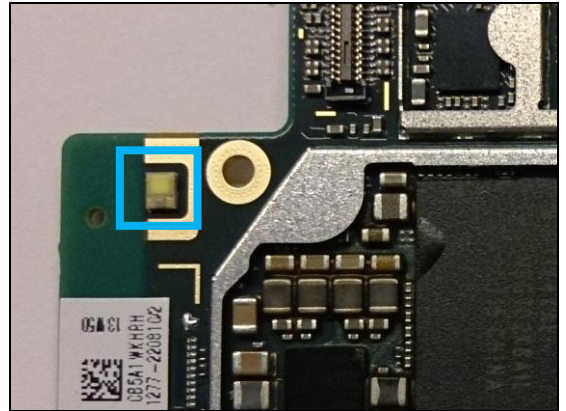


## Repair Actions: Additional Repair Info

**5**

**V7800**

**Replace if Flash LED not working**

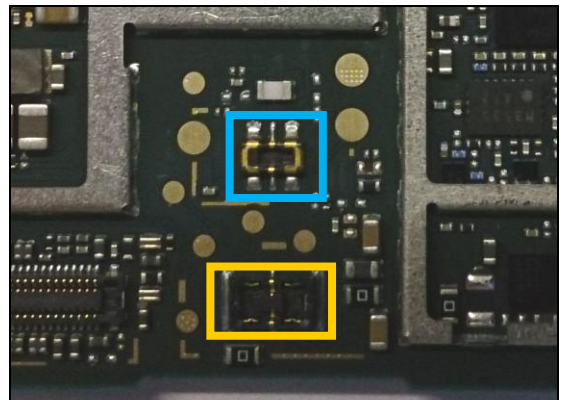


**6**

**X1300**

**Replace if mechanical damaged. (Phone dead or power off)**

**Protect the BtB connector with capton tape!**

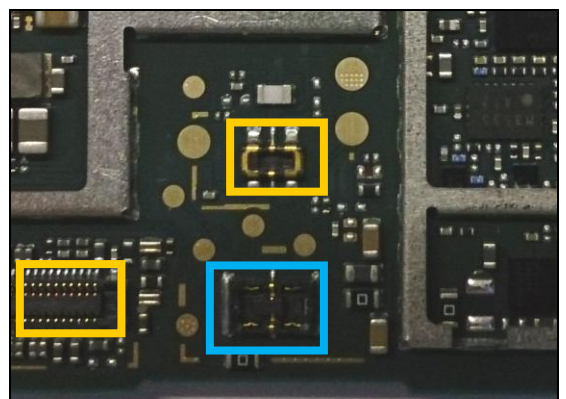


**7**

**X1301**

**Replace if mechanical damaged. (Magnet charger not working)**

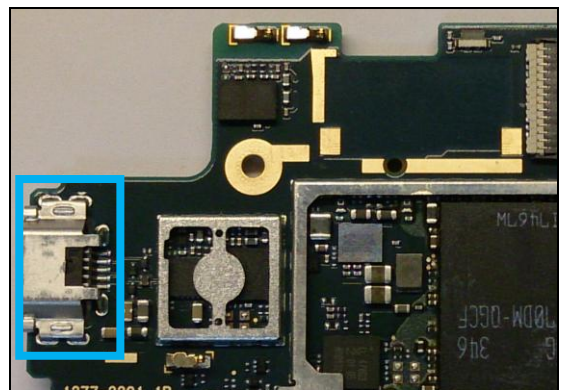
**Protect the BtB connectors with capton tape!**



**8**

**X2200**

**Replace if mechanical damaged (USB charger or data transfer not working)**



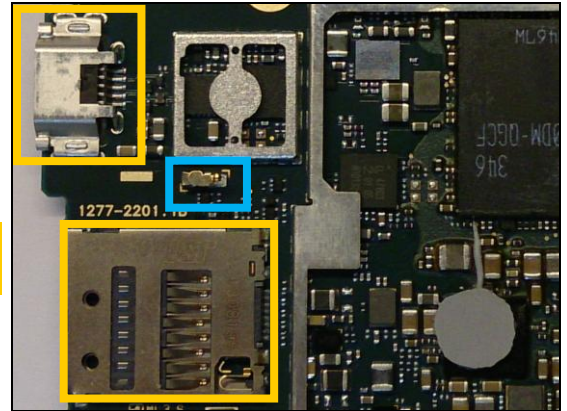


## Repair Actions: Additional Repair Info

**9**

**X2400**

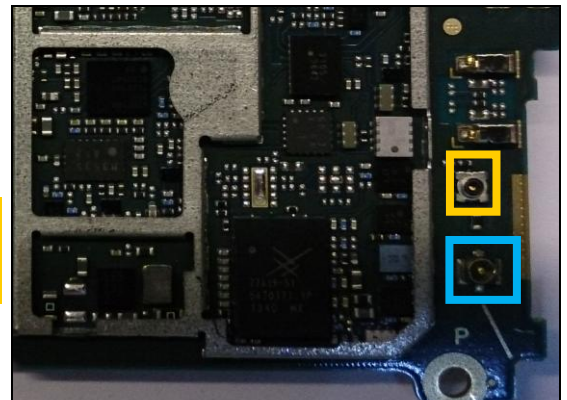
**Replace if mechanical damaged (Grounding Pin)**  
**Protect the SD and USB connectors with capton tape!**



**10**

**X2801**

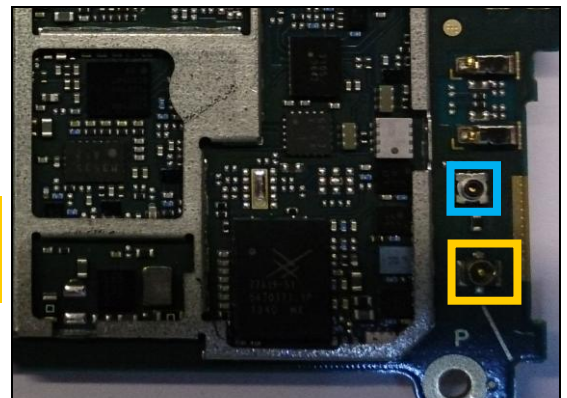
**Replace if mechanical damaged (No or bad network, main antenna)**  
**Protect the RF connector with capton tape!**



**11**

**X2802**

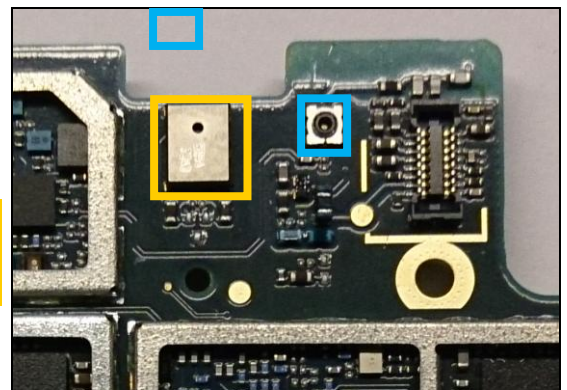
**Replace if open circuit 1-2 (No or bad network, main antenna)**  
**Protect the RF connector with capton tape!**



**12**

**X2803**

**Replace if open circuit 1-2 (Bad network, diversity antenna)**  
**Protect the mic with capton tape!**





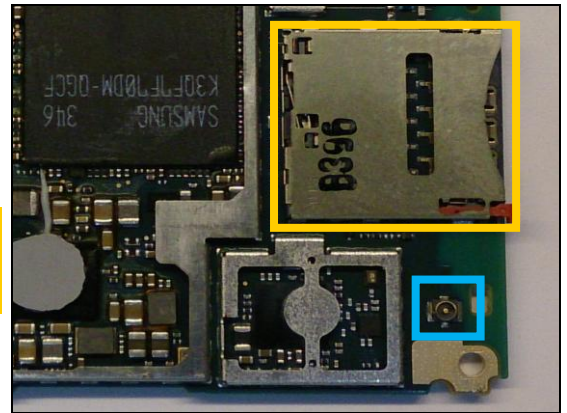
## Repair Actions: Additional Repair Info

**13**

**X2804**

**Replace if mechanical damaged (No or bad network, main antenna 2)**

**Protect the SIM connector with capton tape!**

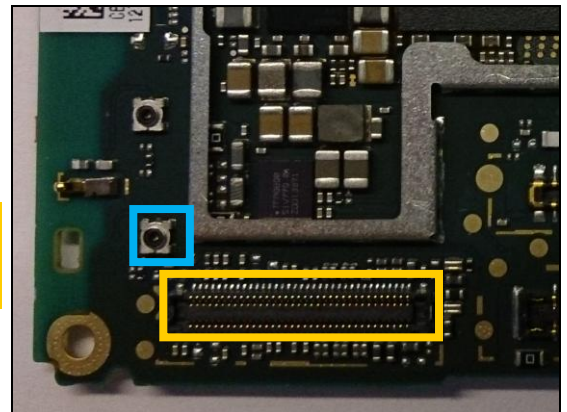


**14**

**X2805**

**Replace if open circuit (No or bad network, main antenna 2)**

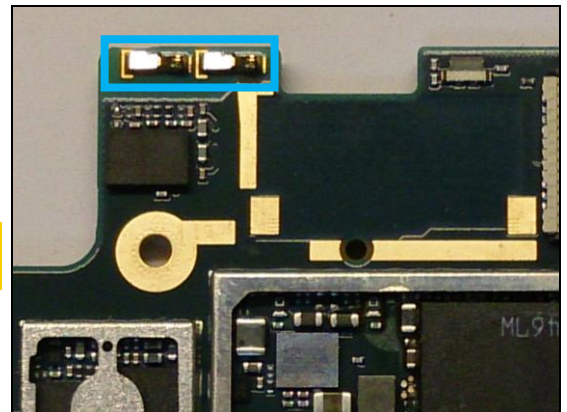
**Protect the BtB connector with capton tape!**



**15**

**X2811, X2812**

**Replace if mechanical damaged (Bad network, diversity antenna)**

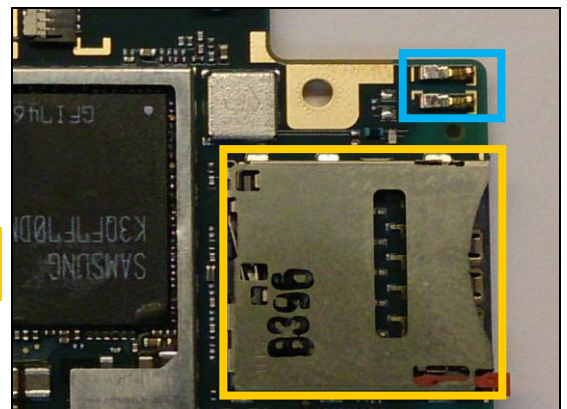


**16**

**X2820, X2821**

**Replace if mechanical damaged (No or bad GPS)**

**Protect the SIM connector with capton tape!**

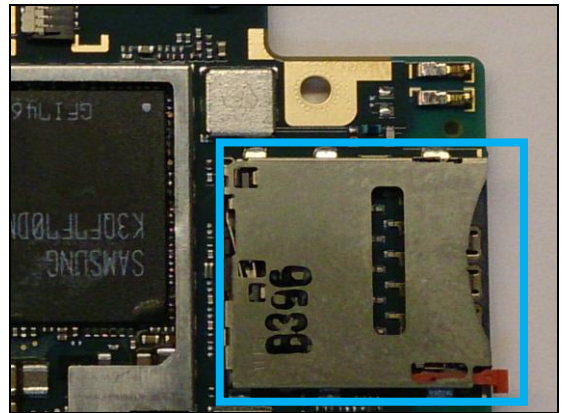


## Repair Actions: Additional Repair Info

**17**

**X4000**

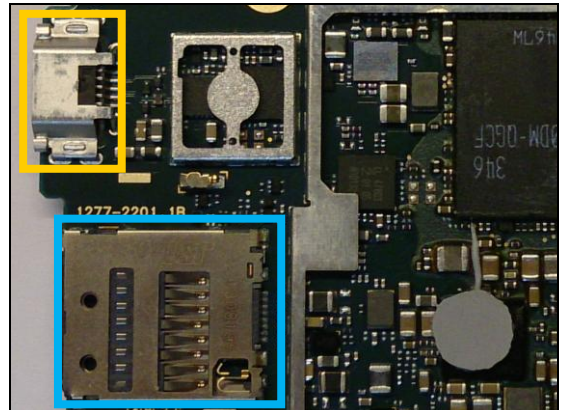
**Replace if mechanical damaged (No network, restart, No SIM card inserted)**



**18**

**X4001**

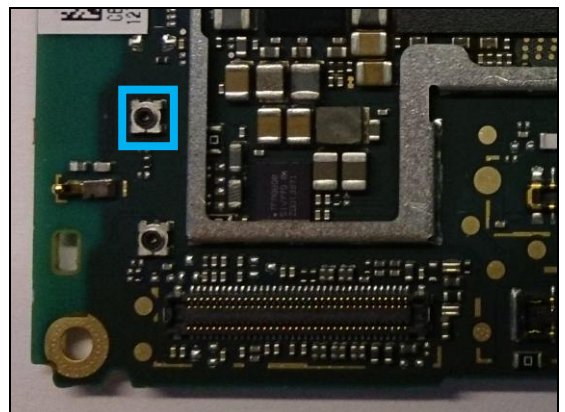
**Replace if mechanical damaged (No SD card )  
Protect the USB connector with capton tape!**



**19**

**X8103**

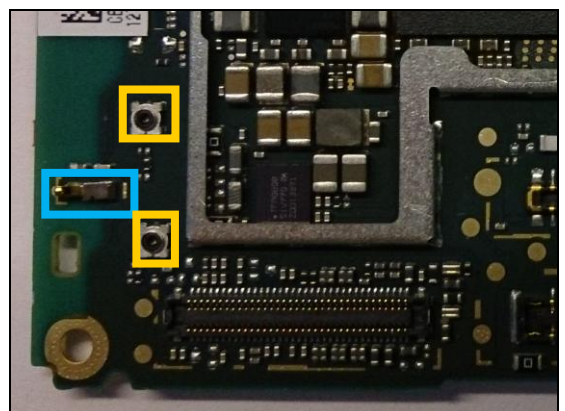
**Replace if open circuit ( No or bad WLAN/ BT)**



**20**

**X8400**

**Replace if mechanical damaged ( No or bad WLAN/ BT)  
Protect the RF connectors with capton tape!**



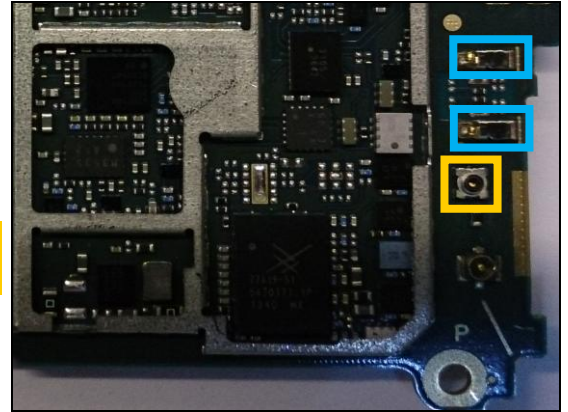
## Repair Actions: Additional Repair Info

21

X8650, X8651

***Replace if mechanical damaged ( no or bad NFC)***

***Protect the RF connector with capton tape!***



## 4 Revision History

| Rev. | Date       | Changes / Comments |
|------|------------|--------------------|
| 1    | 2014-06-11 | Initial release    |